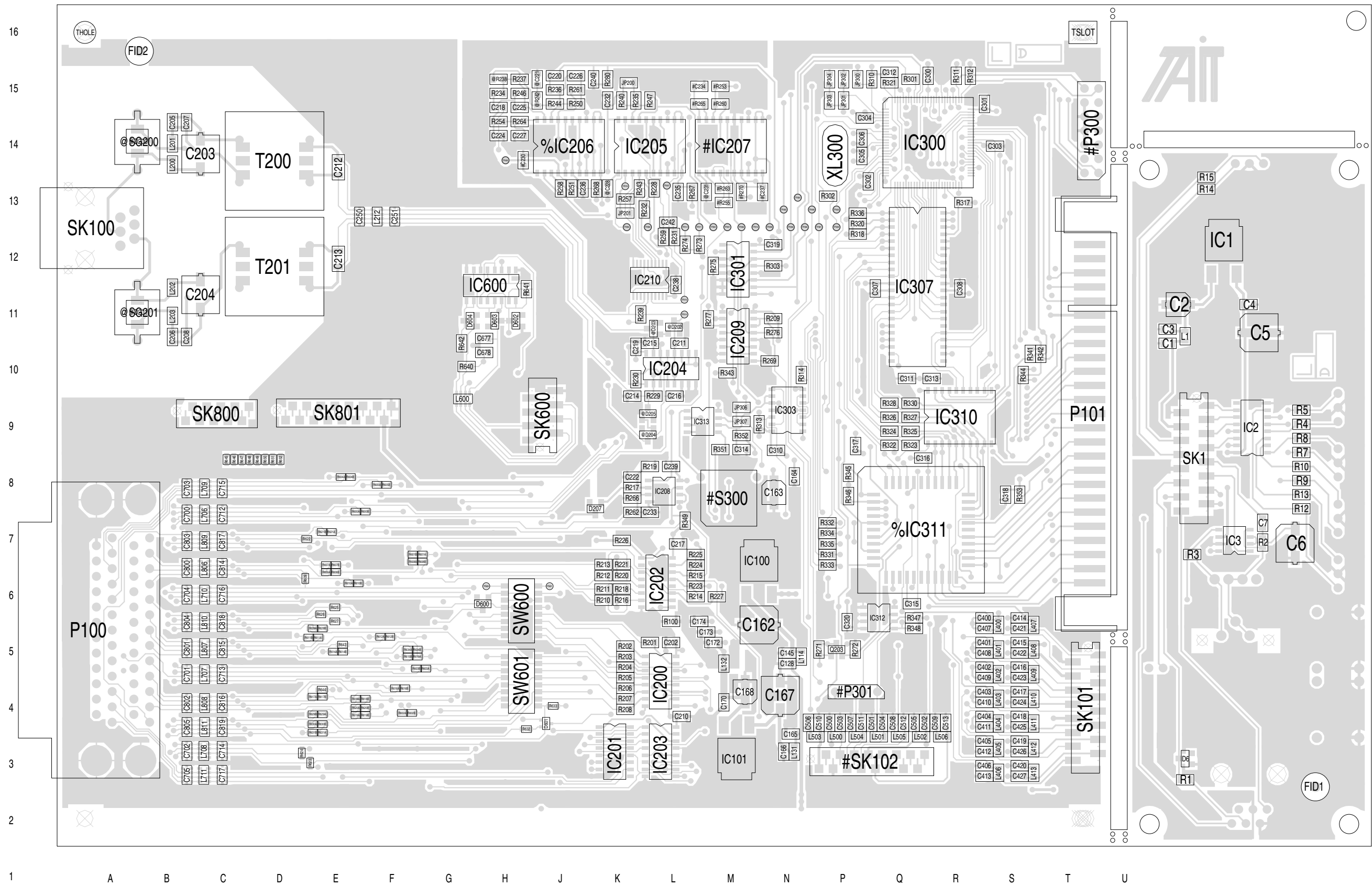
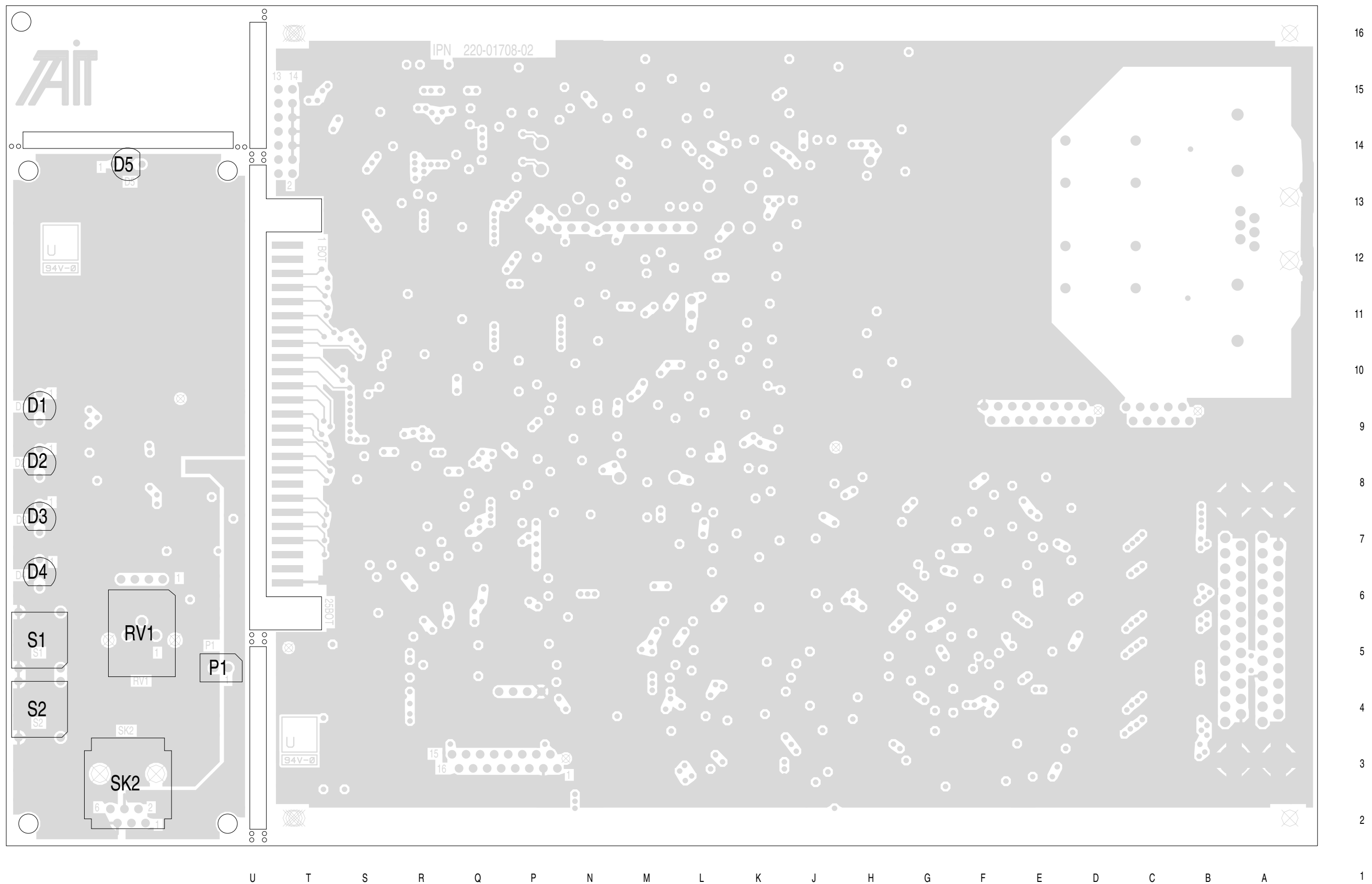


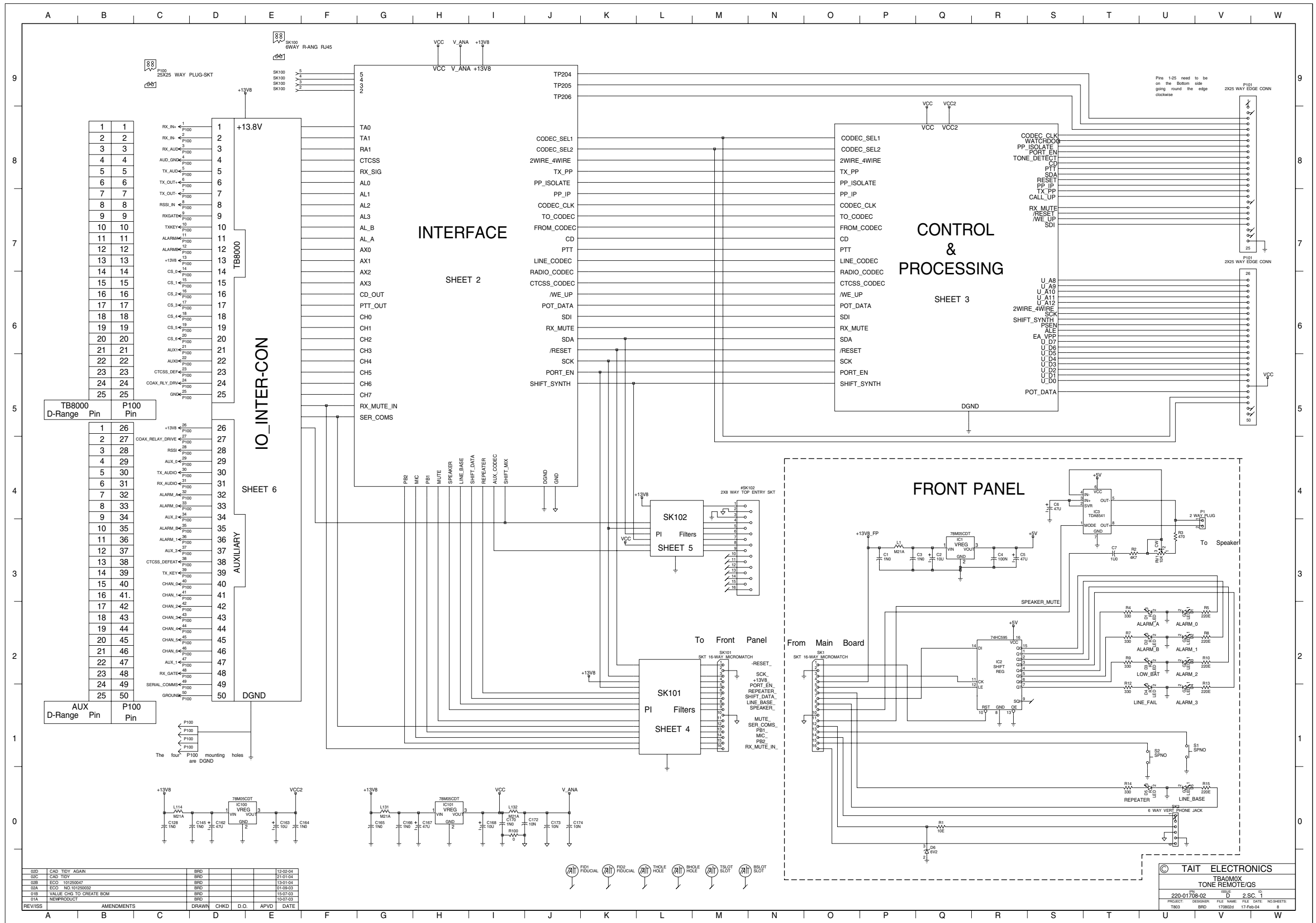
Ref	IPN	Description	Ref	IPN	Description	Ref	IPN	Description
R1	036-12100-10	Res M/F SMD 0805 10e 1%	R313	036-15100-10	Res M/F SMD 0805 10k 1%	RV1	042-05100-10	Res Pre 10k Cer 9.5mm Sq Flat
R10	036-13220-10	Res M/F SMD 0805 220e 1%	R314	036-15100-10	Res M/F SMD 0805 10k 1%	S1	230-00020-38	Sw Spno Thru Hole Pcb Mtg
R100	036-10000-00	Res M/F SMD 0805 0e 0.125w	R317	036-15100-10	Res M/F SMD 0805 10k 1%	S2	230-00020-38	Sw Spno Thru Hole Pcb Mtg
R12	036-13330-10	Res M/F SMD 0805 330e 1%	R318	036-15100-10	Res M/F SMD 0805 10k 1%	SK1	240-10000-07	Conn SMD 16w 2r Skt M/Match
R13	036-13220-10	Res M/F SMD 0805 220e 1%	R320	036-15100-10	Res M/F SMD 0805 10k 1%	SK101	240-10000-07	Conn SMD 16w 2r Skt M/Match
R14	036-13330-10	Res M/F SMD 0805 330e 1%	R321	036-14470-10	Res M/F SMD 0805 4k7 1%	SK2	240-04021-60	Skt 6w Modr Ph Vrt T-Ent
R15	036-13220-10	Res M/F SMD 0805 220e 1%	R322	036-14180-00	Res M/F SMD 0805 1k8 5%	SK600	240-10000-05	Conn SMD 8w 2r Skt M/Match
R2	036-14470-10	Res M/F SMD 0805 4k7 1%	R323	036-14180-00	Res M/F SMD 0805 1k8 5%	SW600	230-10010-10	Sw SMD 8pole S016
R201	036-14100-10	Res M/F SMD 0805 1k 1%	R324	036-14180-00	Res M/F SMD 0805 1k8 5%	SW601	230-10010-10	Sw SMD 8pole S016
R202	036-14100-10	Res M/F SMD 0805 1k 1%	R325	036-14180-00	Res M/F SMD 0805 1k8 5%	T200	054-00010-16	Xfmr Line 600 Ohm 1:1 P1200
R203	036-14100-10	Res M/F SMD 0805 1k 1%	R326	036-14180-00	Res M/F SMD 0805 1k8 5%	T201	054-00010-16	Xfmr Line 600 Ohm 1:1 P1200
R204	036-14100-10	Res M/F SMD 0805 1k 1%	R327	036-14180-00	Res M/F SMD 0805 1k8 5%	XL300	274-00010-59	Xtal 18.432MHz Hc49/U
R205	036-14100-10	Res M/F SMD 0805 1k 1%	R328	036-14180-00	Res M/F SMD 0805 1k8 5%			
R206	036-14100-10	Res M/F SMD 0805 1k 1%	R330	036-14180-00	Res M/F SMD 0805 1k8 5%			
R207	036-14100-10	Res M/F SMD 0805 1k 1%	R331	036-14180-00	Res M/F SMD 0805 1k8 5%			
R208	036-14100-10	Res M/F SMD 0805 1k 1%	R332	036-14180-00	Res M/F SMD 0805 1k8 5%			
R209	036-14470-10	Res M/F SMD 0805 4k7 1%	R333	036-14180-00	Res M/F SMD 0805 1k8 5%			
R210	036-14100-10	Res M/F SMD 0805 1k 1%	R334	036-14180-00	Res M/F SMD 0805 1k8 5%			
R211	036-14100-10	Res M/F SMD 0805 1k 1%	R335	036-14180-00	Res M/F SMD 0805 1k8 5%			
R212	036-14100-10	Res M/F SMD 0805 1k 1%	R336	036-15100-10	Res M/F SMD 0805 10k 1%			
R213	036-14100-10	Res M/F SMD 0805 1k 1%	R341	036-15100-10	Res M/F SMD 0805 10k 1%			
R214	036-14100-10	Res M/F SMD 0805 1k 1%	R342	036-15100-10	Res M/F SMD 0805 10k 1%			
R215	036-14100-10	Res M/F SMD 0805 1k 1%	R343	036-15100-10	Res M/F SMD 0805 10k 1%			
R216	036-15100-10	Res M/F SMD 0805 10k 1%	R344	036-15100-10	Res M/F SMD 0805 10k 1%			
R217	036-14120-00	Res M/F SMD 0805 1k2 5%	R345	036-15100-10	Res M/F SMD 0805 10k 1%			
R218	036-15100-10	Res M/F SMD 0805 10k 1%	R346	036-15100-10	Res M/F SMD 0805 10k 1%			
R219	036-14560-10	Res M/F SMD 0805 5k6 1%	R347	036-15100-10	Res M/F SMD 0805 10k 1%			
R220	036-15100-10	Res M/F SMD 0805 10k 1%	R348	036-15100-10	Res M/F SMD 0805 10k 1%			
R221	036-15100-10	Res M/F SMD 0805 10k 1%	R349	036-15100-10	Res M/F SMD 0805 10k 1%			
R223	036-15100-10	Res M/F SMD 0805 10k 1%	R351	036-15100-10	Res M/F SMD 0805 10k 1%			
R224	036-15100-10	Res M/F SMD 0805 10k 1%	R352	036-14150-10	Res M/F SMD 0805 1k5 1%			
R225	036-15100-10	Res M/F SMD 0805 10k 1%	R353	036-15100-10	Res M/F SMD 0805 10k 1%			
R226	036-15100-10	Res M/F SMD 0805 10k 1%	R4	036-13330-10	Res M/F SMD 0805 330e 1%			
R227	036-14220-10	Res M/F SMD 0805 2k2 1%	R5	036-13220-10	Res M/F SMD 0805 220e 1%			
R228	036-12100-10	Res M/F SMD 0805 10e 1%	R600A	038-10000-00	Res 0603 Zero Ohm 1/16w +-5%			
R229	036-12390-00	Res M/F SMD 0805 39e 5%	R601B	038-10000-00	Res 0603 Zero Ohm 1/16w +-5%			
R230	036-13470-10	Res M/F SMD 0805 470e 1%	R602A	038-10000-00	Res 0603 Zero Ohm 1/16w +-5%			
R231	036-15470-10	Res M/F SMD 0805 47k 1%	R603A	038-10000-00	Res 0603 Zero Ohm 1/16w +-5%			
R232	036-13470-10	Res M/F SMD 0805 470e 1%	R604A	038-10000-00	Res 0603 Zero Ohm 1/16w +-5%			
R234	036-15100-10	Res M/F SMD 0805 10k 1%	R605A	038-10000-00	Res 0603 Zero Ohm 1/16w +-5%			
R235	036-13470-10	Res M/F SMD 0805 470e 1%	R606A	038-10000-00	Res 0603 Zero Ohm 1/16w +-5%			
R236	036-15100-10	Res M/F SMD 0805 10k 1%	R607A	038-10000-00	Res 0603 Zero Ohm 1/16w +-5%			
R237	036-15100-10	Res M/F SMD 0805 10k 1%	R609	038-10000-00	Res 0603 Zero Ohm 1/16w +-5%			
R239	036-13220-10	Res M/F SMD 0805 220e 1%	R610A	038-10000-00	Res 0603 Zero Ohm 1/16w +-5%			
R240	036-14150-10	Res M/F SMD 0805 1k5 1%	R611A	038-10000-00	Res 0603 Zero Ohm 1/16w +-5%			
R243	036-14100-10	Res M/F SMD 0805 1k 1%	R612B	038-10000-00	Res 0603 Zero Ohm 1/16w +-5%			
R244	036-14560-10	Res M/F SMD 0805 5k6 1%	R615B	038-10000-00	Res 0603 Zero Ohm 1/16w +-5%			
R246	036-15100-10	Res M/F SMD 0805 10k 1%	R616B	038-10000-00	Res 0603 Zero Ohm 1/16w +-5%			
R247	036-15470-10	Res M/F SMD 0805 47k 1%	R618B	038-10000-00	Res 0603 Zero Ohm 1/16w +-5%			
R250	036-14560-10	Res M/F SMD 0805 5k6 1%	R619B	038-10000-00	Res 0603 Zero Ohm 1/16w +-5%			
R251	036-14470-10	Res M/F SMD 0805 4k7 1%	R621B	038-10000-00	Res 0603 Zero Ohm 1/16w +-5%			
R254	036-15100-10	Res M/F SMD 0805 10k 1%	R622	038-10000-00	Res 0603 Zero Ohm 1/16w +-5%			
R257	036-14680-10	Res M/F SMD 0805 6k8 1%	R623	038-10000-00	Res 0603 Zero Ohm 1/16w +-5%			
R258	036-15100-10	Res M/F SMD 0805 10k 1%	R624	038-10000-00	Res 0603 Zero Ohm 1/16w +-5%			
R259	036-16100-10	Res M/F SMD 0805 100k 1%	R625	038-10000-00	Res 0603 Zero Ohm 1/16w +-5%			
R261	036-15470-10	Res M/F SMD 0805 47k 1%	R626	038-10000-00	Res 0603 Zero Ohm 1/16w +-5%			
R262	036-15100-10	Res M/F SMD 0805 10k 1%	R627	038-10000-00	Res 0603 Zero Ohm 1/16w +-5%			
R264	036-12220-00	Res M/F SMD 0805 22e 5%	R628B	038-10000-00	Res 0603 Zero Ohm 1/16w +-5%			
R266	036-15330-10	Res M/F SMD 0805 33k 1%	R629B	038-10000-00	Res 0603 Zero Ohm 1/16w +-5%			
R267	036-12100-10	Res M/F SMD 0805 10e 1%	R630A	038-10000-00	Res 0603 Zero Ohm 1/16w +-5%			
R268	036-12100-10	Res M/F SMD 0805 10e 1%	R631A	038-10000-00	Res 0603 Zero Ohm 1/16w +-5%			
R269	036-15100-10	Res M/F SMD 0805 10k 1%	R632	038-10000-00	Res 0603 Zero Ohm 1/16w +-5%			
R271	036-15100-10	Res M/F SMD 0805 10k 1%	R633	038-10000-00	Res 0603 Zero Ohm 1/16w +-5%			
R272	036-14220-10	Res M/F SMD 0805 2k2 1%	R640	036-14100-10	Res M/F SMD 0805 1k 1%			
R273	036-14470-10	Res M/F SMD 0805 4k7 1%	R641	036-14100-10	Res M/F SMD 0805 1k 1%			
R274	036-14470-10	Res M/F SMD 0805 4k7 1%	R642	036-15100-10	Res M/F SMD 0805 10k 1%			
R275	036-14470-10	Res M/F SMD 0805 4k7 1%	R643	038-10000-00	Res 0603 Zero Ohm 1/16w +-5%			
R276	036-14470-10	Res M/F SMD 0805 4k7 1%	R644	038-10000-00	Res 0603 Zero Ohm 1/16w +-5%			
R277	036-14470-10	Res M/F SMD 0805 4k7 1%	R645	038-10000-00	Res 0603 Zero Ohm 1/16w +-5%			
R280	036-15100-10	Res M/F SMD 0805 10k 1%	R646	038-10000-00	Res 0603 Zero Ohm 1/16w +-5%			
R3	036-13470-10	Res M/F SMD 0805 470e 1%	R647	038-10000-00	Res 0603 Zero Ohm 1/16w +-5%			
R301	036-14220-10	Res M/F SMD 0805 2k2 1%	R648	038-10000-00	Res 0603 Zero Ohm 1/16w +-5%			
R302	036-14220-10	Res M/F SMD 0805 2k2 1%	R649	038-10000-00	Res 0603 Zero Ohm 1/16w +-5%			
R303	036-14470-10	Res M/F SMD 0805 4k7 1%	R650	038-10000-00	Res 0603 Zero Ohm 1/16w +-5%			
R310	036-15100-10	Res M/F SMD 0805 10k 1%	R7	036-13330-10	Res M/F SMD 0805 330e 1%			
R311	036-15100-10	Res M/F SMD 0805 10k 1%	R8	036-13220-10	Res M/F SMD 0805 220e 1%			
R312	036-15100-10	Res M/F SMD 0805 10k 1%	R9	036-13330-10	Res M/F SMD 0805 330e 1%			



TAIT ELECTRONICS	IPN: 220-01708-02	ISS: A	ID: 1.TA	DATE: 1 Sep 2003
T803TBA0M0X PCB LAYOUT - TOP SIDE				

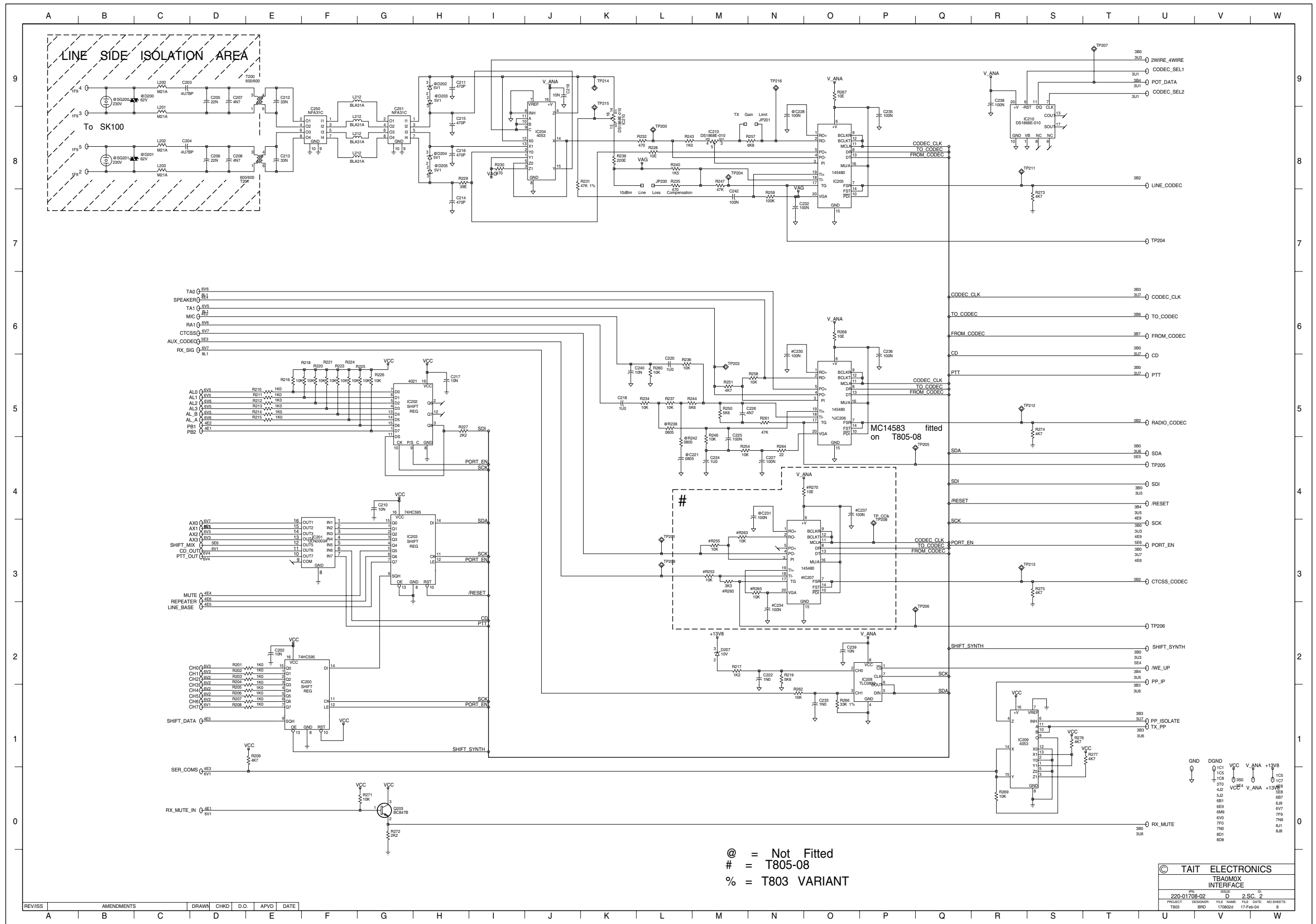


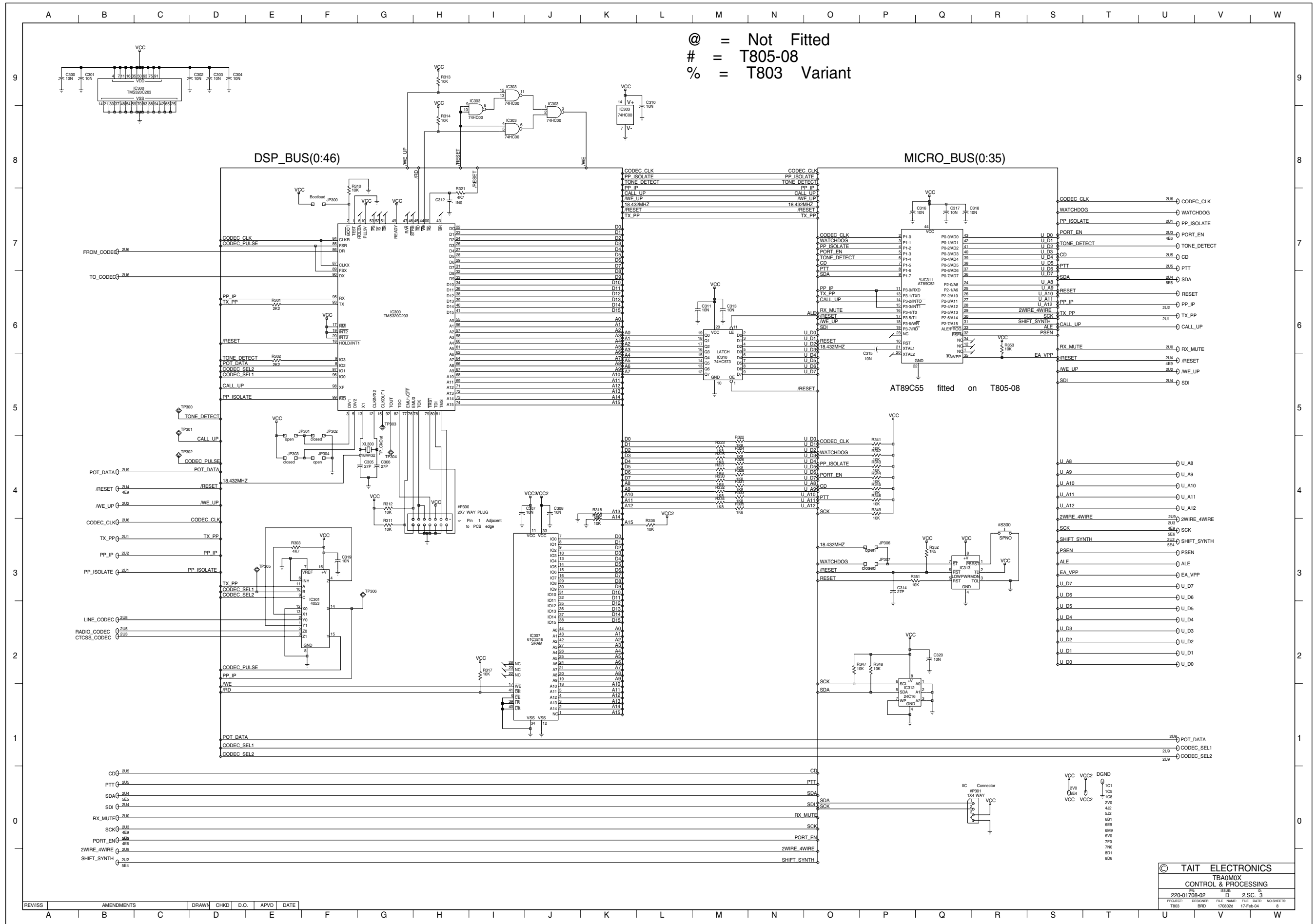
TAIT ELECTRONICS	IPN:	ISS:	ID:	DATE:
	220-01708-02	A	6.BA	1 Sep 2003
T803TBA0M0X PCB LAYOUT - BOTTOM SIDE				

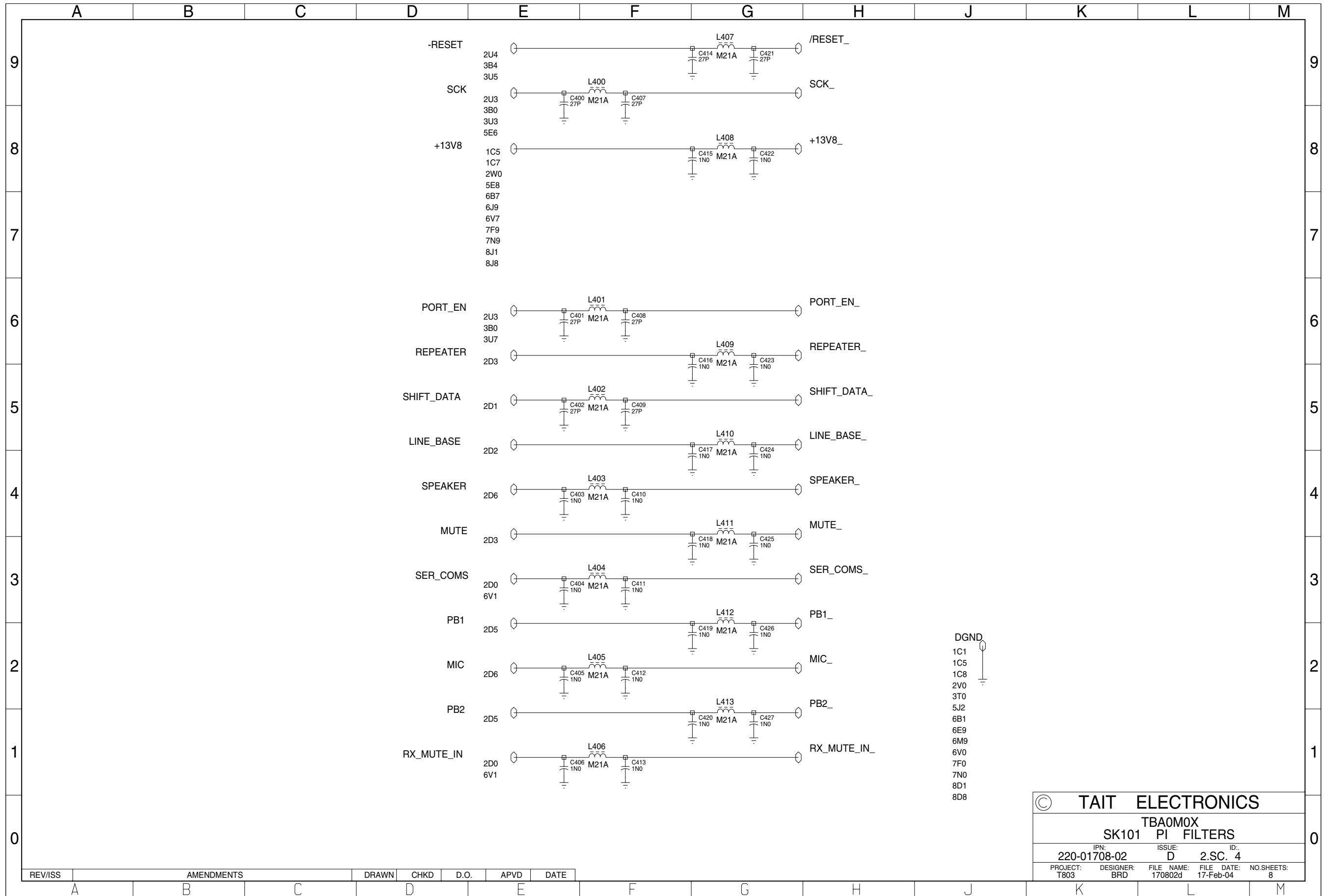


REV/ISS	AMENDMENTS	DRAWN	CHKD	D.O.	APVD	DATE
001						12-02-04
002						21-01-04
003						13-01-04
004						01-09-03
005						15-07-03
006						10-07-03

© TAIT ELECTRONICS
TBA0M0X
REMOTE/OS
 ISSUE: 02
 220-01708-02
 PROJECT: T803
 DESIGNER: BPD
 FILE NAME: 17-Feb-04
 DATE: 17-Feb-04
 NO SHEETS: 8

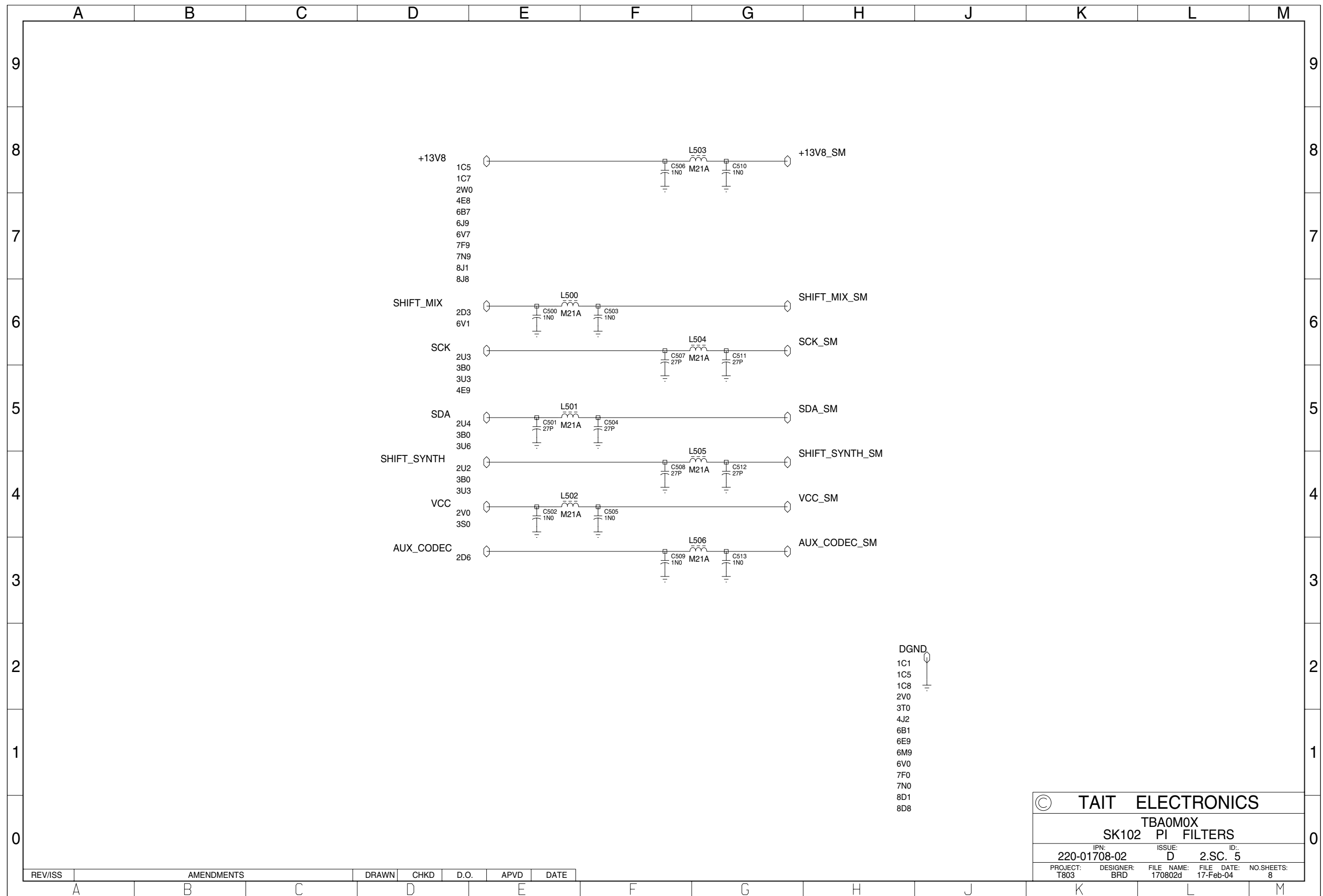


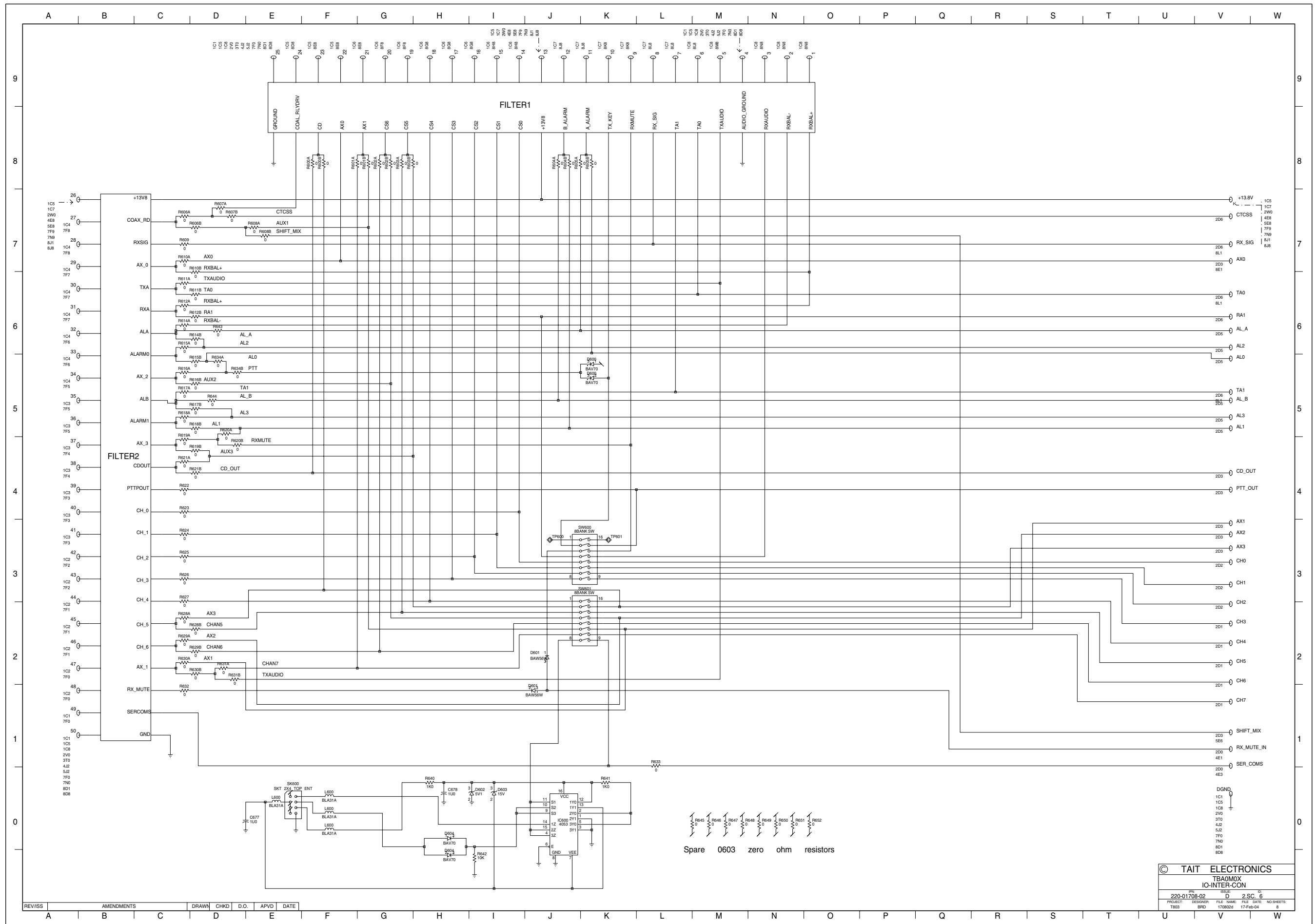


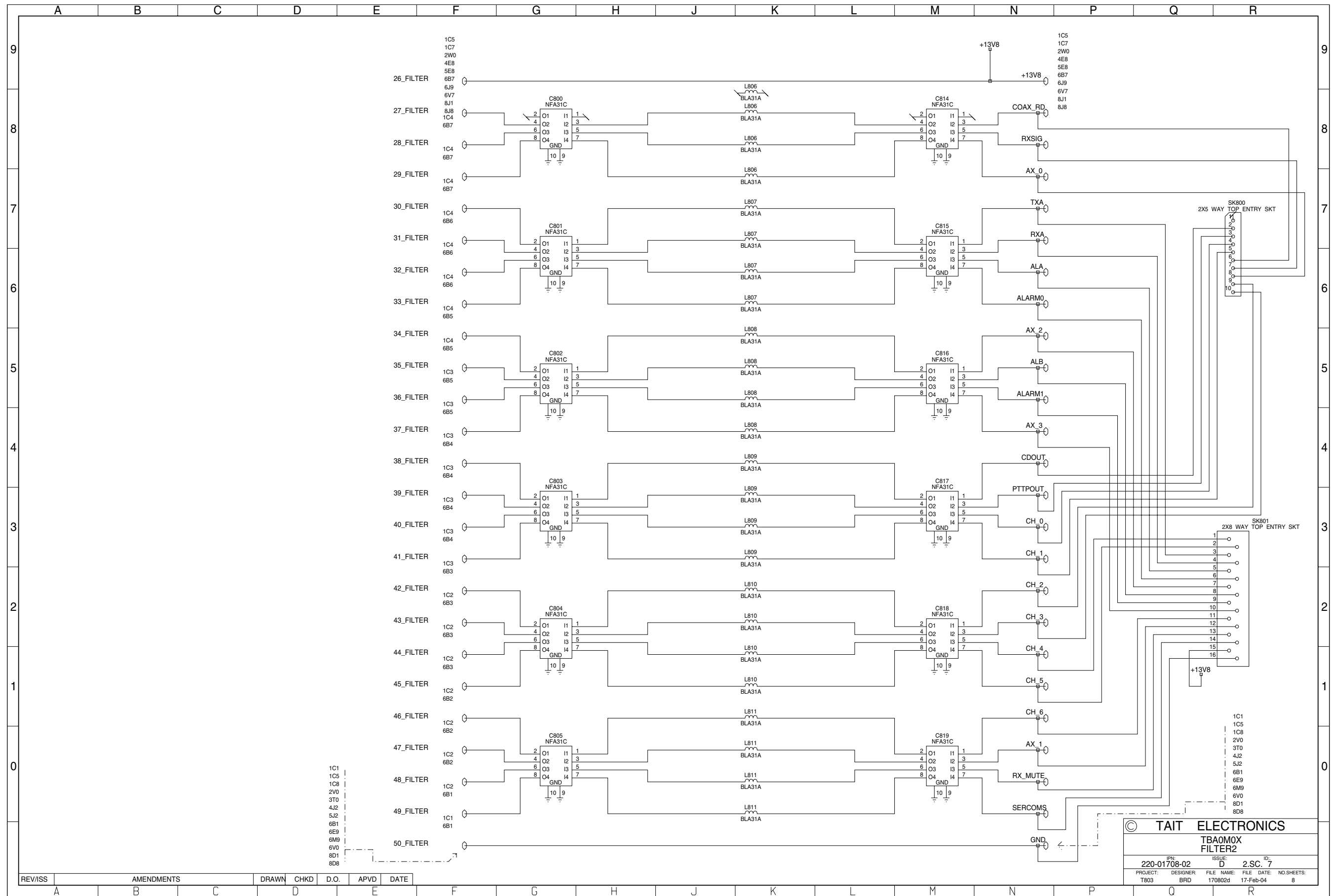


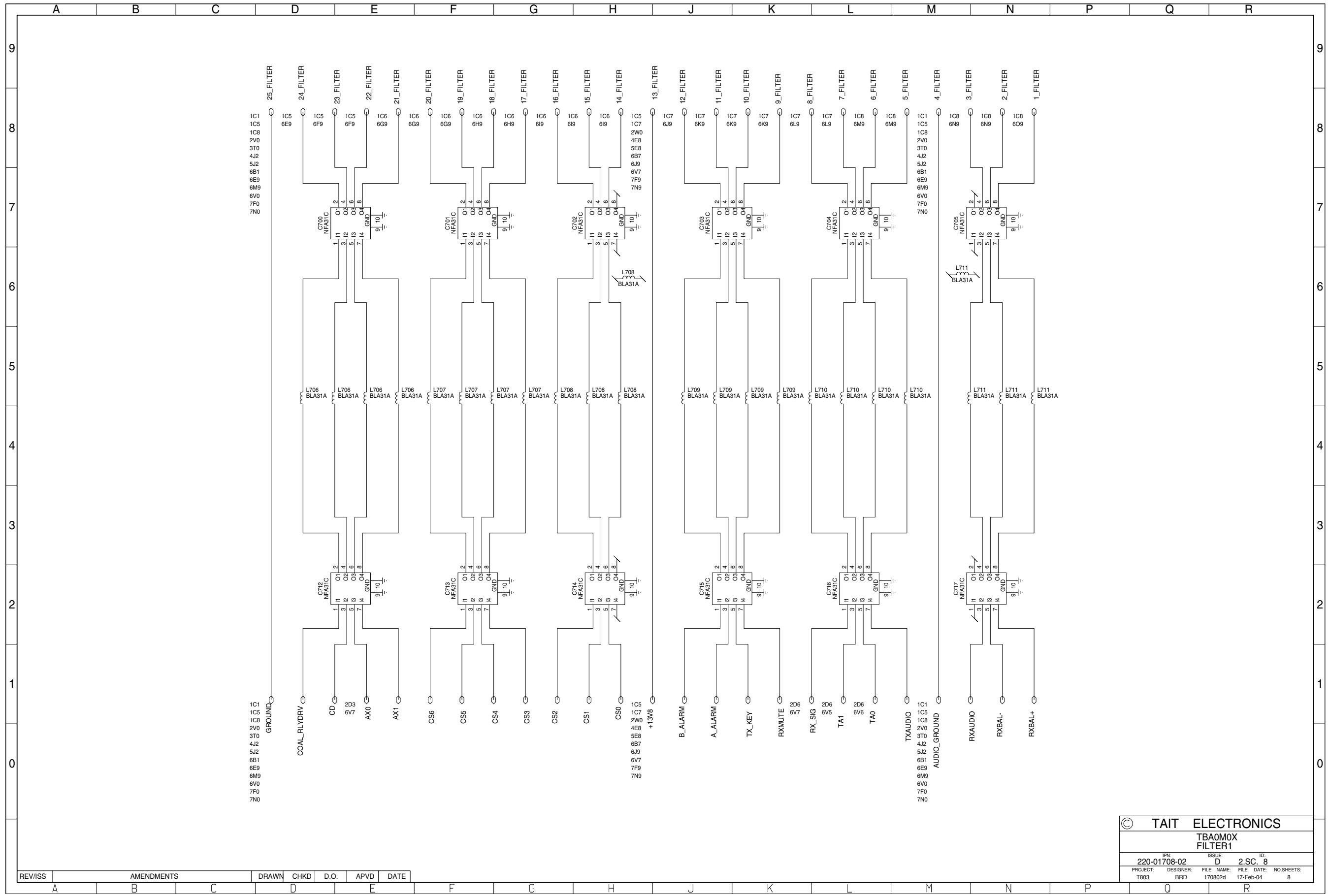
© TAIT ELECTRONICS			
TBA0M0X			
SK101 PI FILTERS			
IPN:	ISSUE:	ID:	
220-01708-02	D	2.SC. 4	
PROJECT:	DESIGNER:	FILE NAME:	FILE DATE:
T803	BRD	170802d	17-Feb-04
NO. SHEETS:		8	

REV/ISS	AMENDMENTS	DRAWN	CHKD	D.O.	APVD	DATE
A						









© TAIT ELECTRONICS	
TBA0M0X FILTER1	
IPN: 220-01708-02	ISSUE: D
DESIGNER: T803	FILE DATE: 17-Feb-04
BRD	NO. SHEETS: 8

REV/ISS	AMENDMENTS	DRAWN	CHKD	D.O.	APVD	DATE